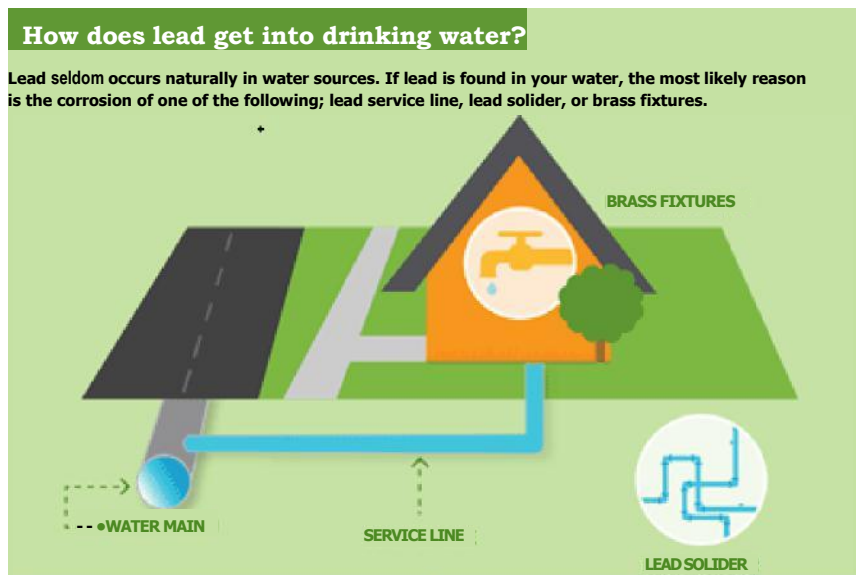


The RM of Rosser is in Search of Households to Participate in the Residential Lead Monitoring Program

FREE TESTING

**** NEW APPLICANTS ONLY****



What can affect the amount of lead in drinking water?

- Chemistry of treated water
- Water temperature
- Changes in source water or treated water quality
- Age of distribution or plumbing system
- Length of time the water sits in the pipes

Who should participate?

Any household connected to the RM of Rosser system is eligible to participate. Priority will be given to households with existing/ known lead water service lines, home-based childcare facilities, and homes built between 1975-1990.

Which households do we need to participate?

The RM of Rosser is looking to sample **NEW** volunteers in the RM, focusing on the Rosser Rural and Grosse Isle areas.

How to get more information and/or *sign up*?

Contact our staff at the RM of Rosser Municipal Office by phone: (204) 467-5711 or by [email: info@rmofrosser.com](mailto:info@rmofrosser.com) to be added to our list.