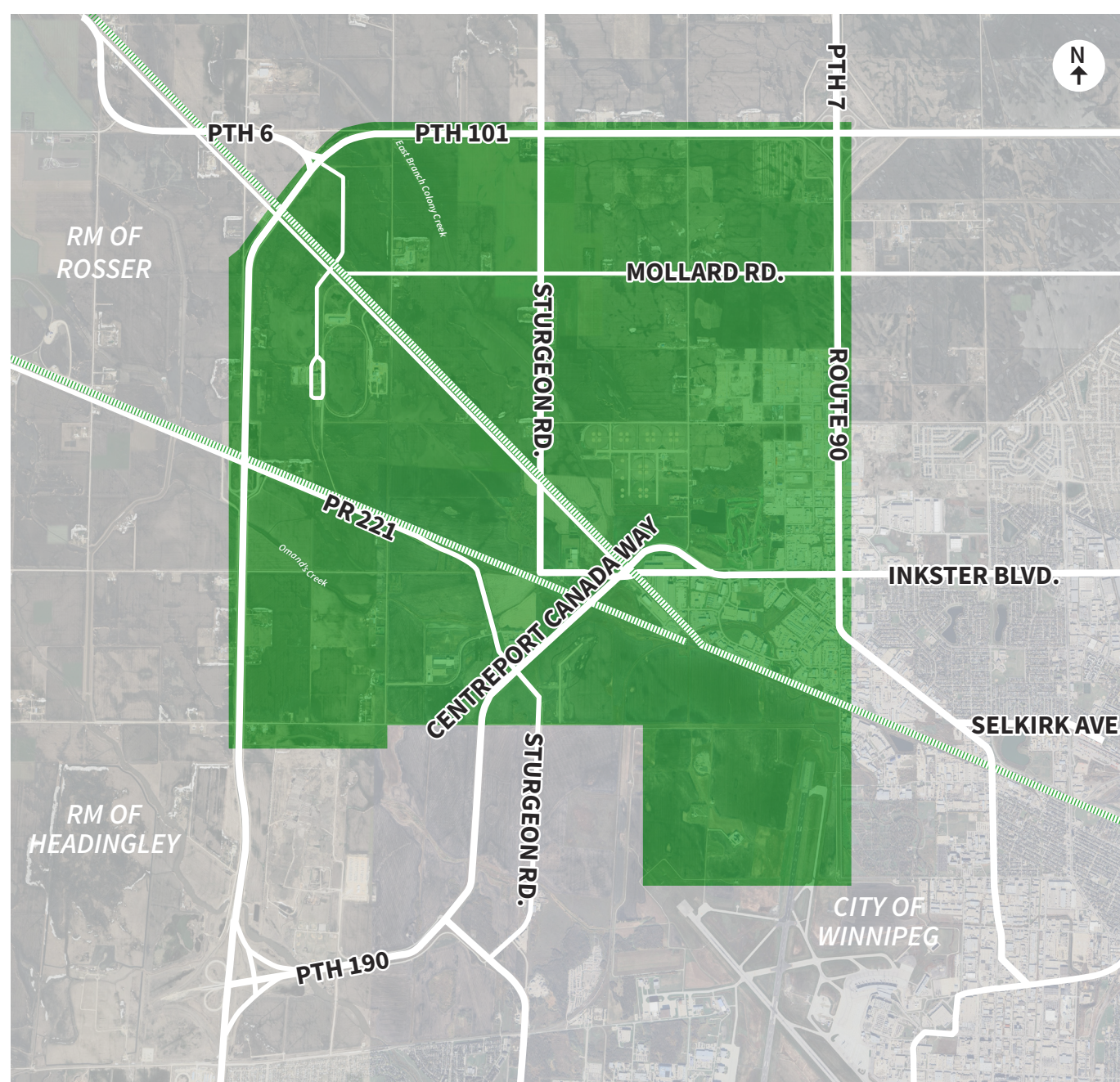


CentrePort Provincial Highway Network Functional Design Study

OPEN
HOUSE

Manitoba Transportation and Infrastructure (MTI) has initiated a study that will inform the design of the provincial highway network within the CentrePort lands. The study will help to identify future road and intersection needs as the CentrePort area is developed and provide guidance on where future roads, intersections and key connections will be located.

Please join us at a come-and-go open house to review the proposed road design options and provide your feedback.



Open House Details:

Date: Thursday, June 4, 2026

Time: 6 p.m. to 8 p.m.

Location: Sandman Signature Winnipeg Airport, Hotel, 1760 Sargent Ave., Winnipeg, MB
Wolseley AB Room (*main floor, fully accessible*). Conference entry and parking available at the back.

Format: Come and go

Questions?

If you have any questions in advance of the open house, please reach out to brett.hampton@wsp.com or 431-485-0765.